
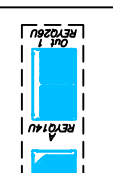

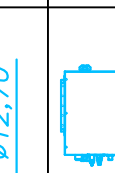
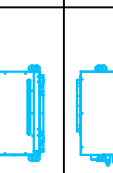
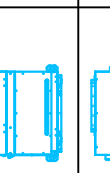
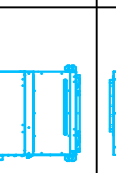
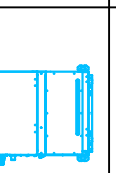
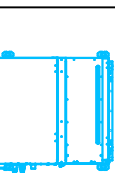


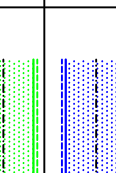
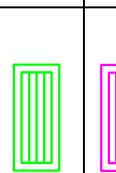
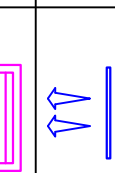




LEGENDA

	UNITA' ESTERNA IN POMPA DI CALORE PER SISTEMA VRV-IV MARCA DAIKIN CON GAS R-410A Mod. REY024U CAPACITA' RISCALDAMENTO NOM. 67,4kW - SCOP 4,30 CAPACITA' RAFFRESCAMENTO NOM. 67,4kW - SEER 6,30 ALIMENTAZIONE TRIFASE (3/400V/50Hz)
	UNITA' ESTERNA IN POMPA DI CALORE PER SISTEMA VRV-IV MARCA DAIKIN CON GAS R-410A Mod. REY026U CAPACITA' RISCALDAMENTO NOM. 83,4kW - SCOP 4,60 CAPACITA' RAFFRESCAMENTO NOM. 73,3kW - SEER 6,50 ALIMENTAZIONE TRIFASE (3/400V/50Hz)
	PANNELLO DI COMANDO AMBIENTE A FILO
	TUBAZIONI FRIGORIFERE #5,40 #12,70
	UNITA' INTERNA IN POMPA DI CALORE PER SISTEMA VRV-IV MARCA DAIKIN CON GAS R-410A Mod. FXS015A DIMA 245x550x800(H)mm - PESO 23,5kg CAPACITA' RAF. NOM. 1,7kW - CAPACITA' RISC. NOM. 1,9kW CAPACITA' RAF. NOM. 1,7kW - CAPACITA' RISC. NOM. 1,9kW ALIMENTAZIONE MONOFASE (1/220V/50Hz) - POTENZA ELETTRICA ASSORBITA 41W
	UNITA' INTERNA IN POMPA DI CALORE PER SISTEMA VRV-IV MARCA DAIKIN CON GAS R-410A Mod. FXS020A DIMA 245x550x800(H)mm - PESO 25,5kg CAPACITA' RAF. NOM. 2,2kW - CAPACITA' RISC. NOM. 2,5kW CAPACITA' RAF. NOM. 2,2kW - CAPACITA' RISC. NOM. 2,5kW ALIMENTAZIONE MONOFASE (1/220V/50Hz) - POTENZA ELETTRICA ASSORBITA 41W
	UNITA' INTERNA IN POMPA DI CALORE PER SISTEMA VRV-IV MARCA DAIKIN CON GAS R-410A Mod. FXS025A DIMA 245x550x800(H)mm - PESO 23,5kg CAPACITA' RAF. NOM. 2,8kW - CAPACITA' RISC. NOM. 3,2kW CAPACITA' RAF. NOM. 2,8kW - CAPACITA' RISC. NOM. 3,2kW ALIMENTAZIONE MONOFASE (1/220V/50Hz) - POTENZA ELETTRICA ASSORBITA 41W
	UNITA' INTERNA IN POMPA DI CALORE PER SISTEMA VRV-IV MARCA DAIKIN CON GAS R-410A Mod. FXS032A DIMA 245x550x800(H)mm - PESO 23,5kg CAPACITA' RAF. NOM. 3,6kW - CAPACITA' RISC. NOM. 4,0kW CAPACITA' RAF. NOM. 3,6kW - CAPACITA' RISC. NOM. 4,0kW ALIMENTAZIONE MONOFASE (1/220V/50Hz) - POTENZA ELETTRICA ASSORBITA 45W
	UNITA' INTERNA IN POMPA DI CALORE PER SISTEMA VRV-IV MARCA DAIKIN CON GAS R-410A Mod. FXS040A DIMA 245x700x800(H)mm - PESO 28,5kg CAPACITA' RAF. NOM. 4,5kW - CAPACITA' RISC. NOM. 5,0kW CAPACITA' RAF. NOM. 4,5kW - CAPACITA' RISC. NOM. 5,0kW ALIMENTAZIONE MONOFASE (1/220V/50Hz) - POTENZA ELETTRICA ASSORBITA 59W
	UNITA' INTERNA IN POMPA DI CALORE PER SISTEMA VRV-IV MARCA DAIKIN CON GAS R-410A Mod. FXS050A CAPACITA' RAF. NOM. 5,6kW - CAPACITA' RISC. NOM. 6,3kW CAPACITA' RAF. NOM. 5,6kW - CAPACITA' RISC. NOM. 6,3kW ALIMENTAZIONE MONOFASE (1/220V/50Hz) - POTENZA ELETTRICA ASSORBITA 89W
	TERMOARREDO ELETTRICO MARCA IRISAP serie NOVO
	CANALE RETTANGOLARE IN SCHIUMA POLIURETANICA PER L'ESPULSIONE DELL' ARIA
	CANALE RETTANGOLARE IN SCHIUMA POLIURETANICA PER L'IMMISSIONE DELL' ARIA
	GRIGLIA DI ESTRAZIONE MARCA FCR modello GRAN25 600x200
	GRIGLIA DI ESTRAZIONE MARCA FCR modello GRAN25 600x300
	GRIGLIA DI IMMISSIONE MARCA FCR modello BPRA2 600x120

[illegible]

DISTRIBUZIONE IMPIANTO TERMICO – PIANO PRIMO

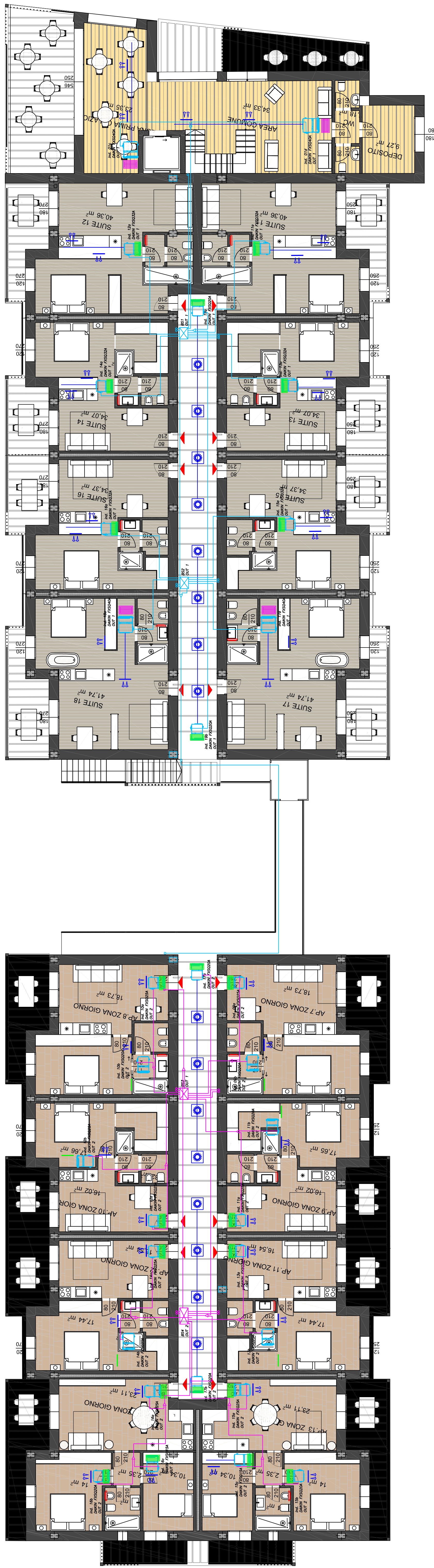


TABELLA TUBAZIONI IN RAME

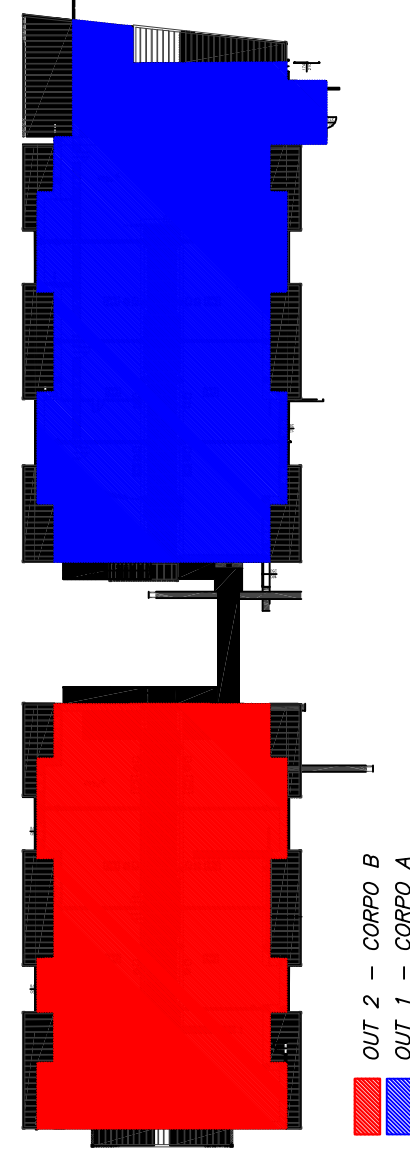
TABELLA ISOLAMENTO PER TUBAZIONI ALL'ESTERNO DELL'EDIFICIO					
Spessore mm	Diametro spolci	Diametro esterno	Spessore mm	Diametro spolci	Diametro esterno
1,21 mm	1/4"	3/8"	0,8 mm	3/4"	1"
1,43 mm	1/2"	5/8"	0,8 mm	1"	1 1/8"
1,43 mm	3/4"	1"	0,8 mm	1 1/4"	1 3/4"
1,43 mm	1"	1 1/8"	0,8 mm	1 3/4"	2"
1,43 mm	1 1/4"	1 3/4"	0,8 mm	2"	2 1/2"
1,43 mm	1 3/4"	2"	0,8 mm	2 1/4"	2 3/4"
1,43 mm	2"	2 1/2"	0,8 mm	2 3/4"	3"
1,43 mm	2 1/4"	2 3/4"	0,8 mm	3"	3 1/2"
1,43 mm	2 3/4"	3"	0,8 mm	3 1/4"	3 3/4"
1,43 mm	3"	3 1/2"	0,8 mm	3 3/4"	4"
1,43 mm	3 1/4"	3 3/4"	0,8 mm	4"	4 1/2"
1,43 mm	3 3/4"	4"	0,8 mm	4 1/4"	4 3/4"
1,43 mm	4"	4 1/2"	0,8 mm	4 3/4"	5"
1,43 mm	4 1/4"	4 3/4"	0,8 mm	5"	5 1/2"
1,43 mm	4 3/4"	5"	0,8 mm	5 1/4"	5 3/4"
1,43 mm	5"	5 1/2"	0,8 mm	5 3/4"	6"
1,43 mm	5 1/4"	5 3/4"	0,8 mm	6"	6 1/2"
1,43 mm	5 3/4"	6"	0,8 mm	6 1/4"	6 3/4"
1,43 mm	6"	6 1/2"	0,8 mm	6 3/4"	7"
1,43 mm	6 1/4"	6 3/4"	0,8 mm	7"	7 1/2"
1,43 mm	6 3/4"	7"	0,8 mm	7 1/4"	7 3/4"
1,43 mm	7"	7 1/2"	0,8 mm	7 3/4"	8"
1,43 mm	7 1/4"	7 3/4"	0,8 mm	8"	8 1/2"
1,43 mm	7 3/4"	8"	0,8 mm	8 1/4"	8 3/4"
1,43 mm	8"	8 1/2"	0,8 mm	8 3/4"	9"
1,43 mm	8 1/4"	8 3/4"	0,8 mm	9"	9 1/2"
1,43 mm	8 3/4"	9"	0,8 mm	9 1/4"	9 3/4"
1,43 mm	9"	9 1/2"	0,8 mm	9 3/4"	10"
1,43 mm	9 1/4"	9 3/4"	0,8 mm	10"	10 1/2"
1,43 mm	9 3/4"	10"	0,8 mm	10 1/4"	10 3/4"
1,43 mm	10"	10 1/2"	0,8 mm	10 3/4"	11"
1,43 mm	10 1/4"	10 3/4"	0,8 mm	11"	11 1/2"
1,43 mm	10 3/4"	11"	0,8 mm	11 1/4"	11 3/4"
1,43 mm	11"	11 1/2"	0,8 mm	11 3/4"	12"
1,43 mm	11 1/4"	11 3/4"	0,8 mm	12"	12 1/2"
1,43 mm	11 3/4"	12"	0,8 mm	12 1/4"	12 3/4"
1,43 mm	12"	12 1/2"	0,8 mm	12 3/4"	13"
1,43 mm	12 1/4"	12 3/4"	0,8 mm	13"	13 1/2"
1,43 mm	12 3/4"	13"	0,8 mm	13 1/4"	13 3/4"
1,43 mm	13"	13 1/2"	0,8 mm	13 3/4"	14"
1,43 mm	13 1/4"	13 3/4"	0,8 mm	14"	14 1/2"
1,43 mm	13 3/4"	14"	0,8 mm	14 1/4"	14 3/4"
1,43 mm	14"	14 1/2"	0,8 mm	14 3/4"	15"
1,43 mm	14 1/4"	14 3/4"	0,8 mm	15"	15 1/2"
1,43 mm	14 3/4"	15"	0,8 mm	15 1/4"	15 3/4"
1,43 mm	15"	15 1/2"	0,8 mm	15 3/4"	16"
1,43 mm	15 1/4"	15 3/4"	0,8 mm	16"	16 1/2"
1,43 mm	15 3/4"	16"	0,8 mm	16 1/4"	16 3/4"
1,43 mm	16"	16 1/2"	0,8 mm	16 3/4"	17"
1,43 mm	16 1/4"	16 3/4"	0,8 mm	17"	17 1/2"
1,43 mm	16 3/4"	17"	0,8 mm	17 1/4"	17 3/4"
1,43 mm	17"	17 1/2"	0,8 mm	17 3/4"	18"
1,43 mm	17 1/4"	17 3/4"	0,8 mm	18"	18 1/2"
1,43 mm	17 3/4"	18"	0,8 mm	18 1/4"	18 3/4"
1,43 mm	18"	18 1/2"	0,8 mm	18 3/4"	19"
1,43 mm	18 1/4"	18 3/4"	0,8 mm	19"	19 1/2"
1,43 mm	18 3/4"	19"	0,8 mm	19 1/4"	19 3/4"
1,43 mm	19"	19 1/2"	0,8 mm	19 3/4"	20

TABELLA ISOLAMENTO PER TUBAZIONI ALL'ESTERNO DELL'EDIFICIO

[illegible]

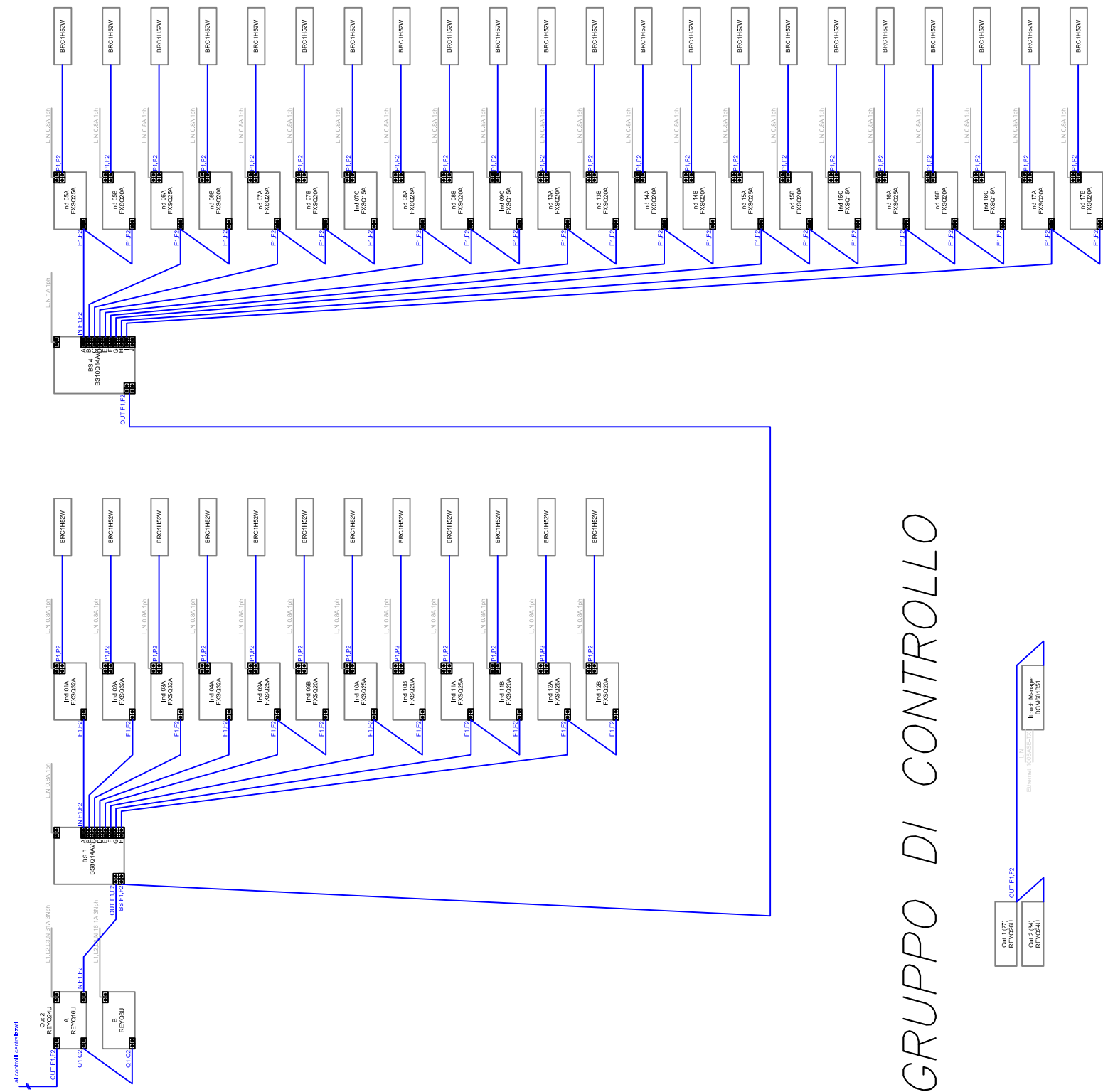
TABELLA ISOLAMENTO PER TUBAZIONI ALL'INTERNO EDIFICIO

Diametro esterno	Diametro interno	Spessore isolante	Diametro esterno	Diametro interno	Spessore isolante	Diametro esterno	Diametro interno	Spessore isolante
6,4 mm	1/4"	6 mm	19,1 mm	3/4"	9 mm	31,8 mm	---	12 mm
9,5 mm	3/8"	6 mm	22,2 mm	7/8"	9 mm	34,9 mm	13/8"	12 mm
12,7 mm	1/2"	6 mm	25,4 mm	1"	9 mm	38,1 mm	1 1/2"	12 mm
15,9 mm	5/8"	6 mm	26,6 mm	1 1/8"	9 mm	41,3 mm	1 5/8"	12 mm



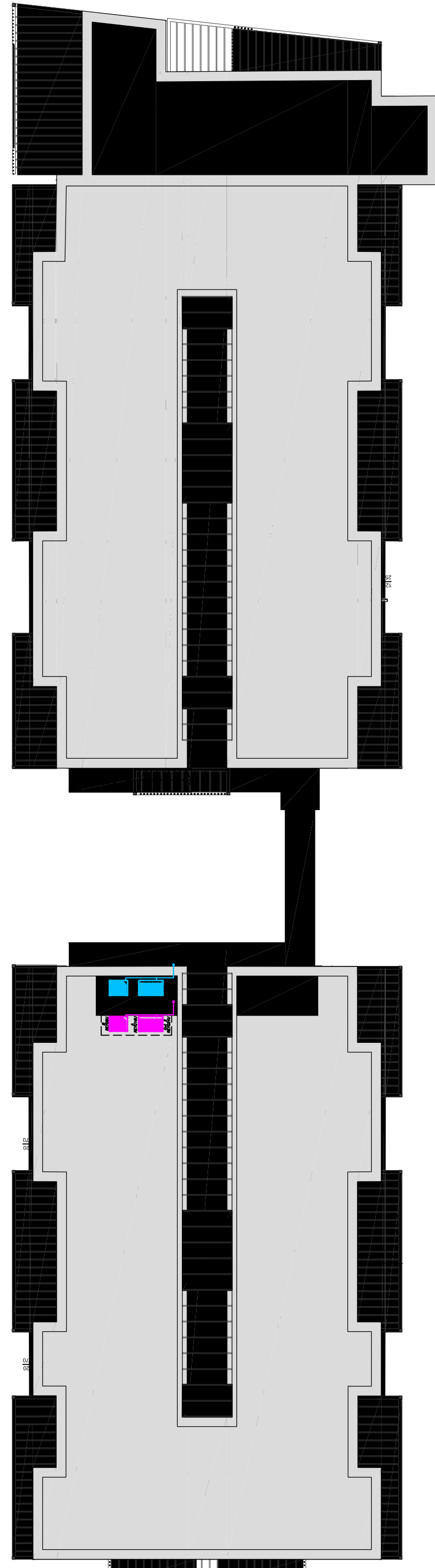
OUT 2 - CORPO B
OUT 1 - CORPO A

COLLEGAMENTI ELETTRICI - OUT 2



GRUPPO DI CONTROLLO

DISTRIBUZIONE IMPIANTO TERMICO – COPERTURA



COLLEGAMENTI ELETTRICI - OUT 1

